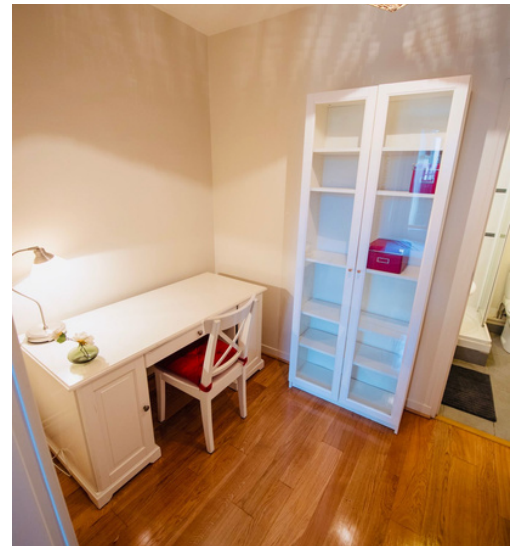







ROOM 2 - MAYA

- Ground floor, close to common areas view on back terrace
- Double bed, bedside table and lamp
- Separate study room, proper desk and chair
- Private en-suite bathroom and shower
- Ample storage -wardrobe, cupboard, bookshelf
- Lamps, flat screen TV, mini-safe and fan
- full-length mirror, luggage storage place
- Easy access to everything the social scene, your room, back patio or dashing out the door



Properties

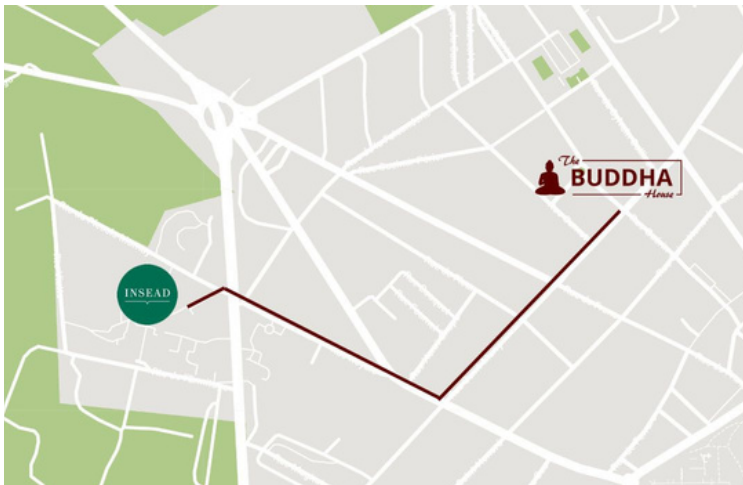
-  Double bed
  En-suite bathroom
  20 m2
  Ground floor
  Wardrobe, cupboard

Amenities

-  High-speed wifi
  Cleaning
  Separate study
  Flat screen TV
-  Full body mirror
  Luggage storage room
  Linens
  Utilities (all included)
-  Tenant taxes
  Towels
  Laundry room

THE HOUSE

Walk to INSEAD and everything else



	Insead	9 minute walk
	Restaurants	5 minute walk
	Supermarket	3 minute walk
	Pharmacy	5 minute walk
	Parties /Town	5 minute walk
	Fitness	9 minute walk

- Ten fully finished rooms with private en-suite bathroom and shower
- Eight shared community spaces:
 - Complete kitchen and dining room
 - 2 living rooms on 2 separate floors
 - 2 terraces
 - Full facility laundry room : 2 washing machines, 2 dryers, 2 ironing boards, 2 irons
 - Luggage storage room
 - Separate guest washroom



Whatsapp +33-6-83-60-00-25



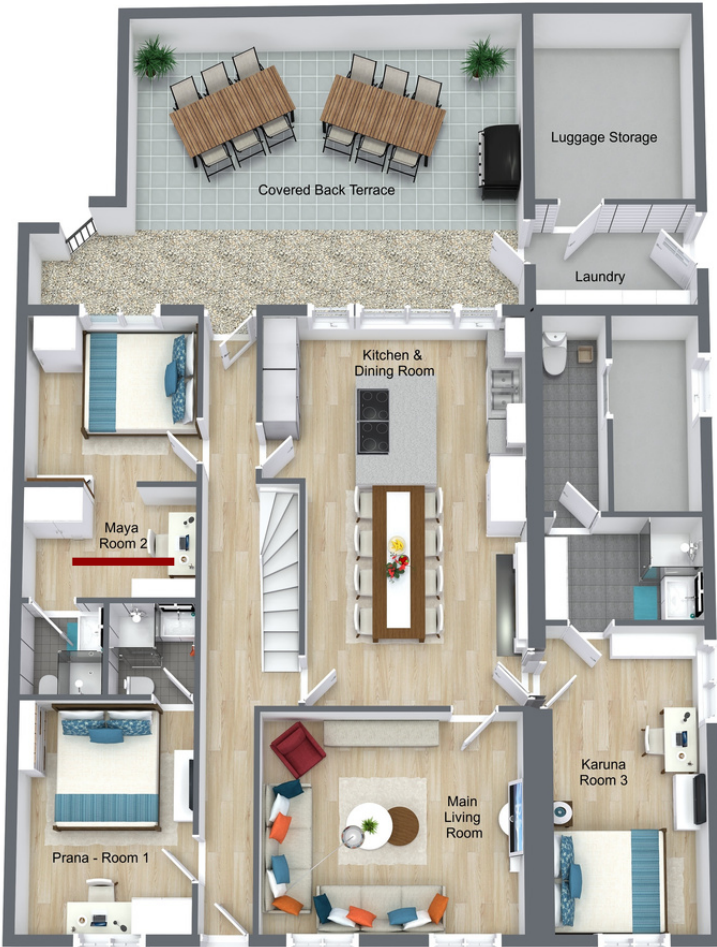
Email ranidurand@yahoo.com



@buddhahouse_fontainebleau

FLOOR PLANS - ROOM 2 - GROUND FLOOR (Level 1 of 3)

Ground Floor - Level 1



First Floor- Level 2



Second Floor-Level 3



Whatsapp +33-6-83-60-00-25




Email ranidurand@yahoo.com



@buddhahouse_fontainebleau

THE EXPERIENCE



"You will meet more than 500 colleagues from around the world at INSEAD, but you will only share a house with 9 amazing ones."

